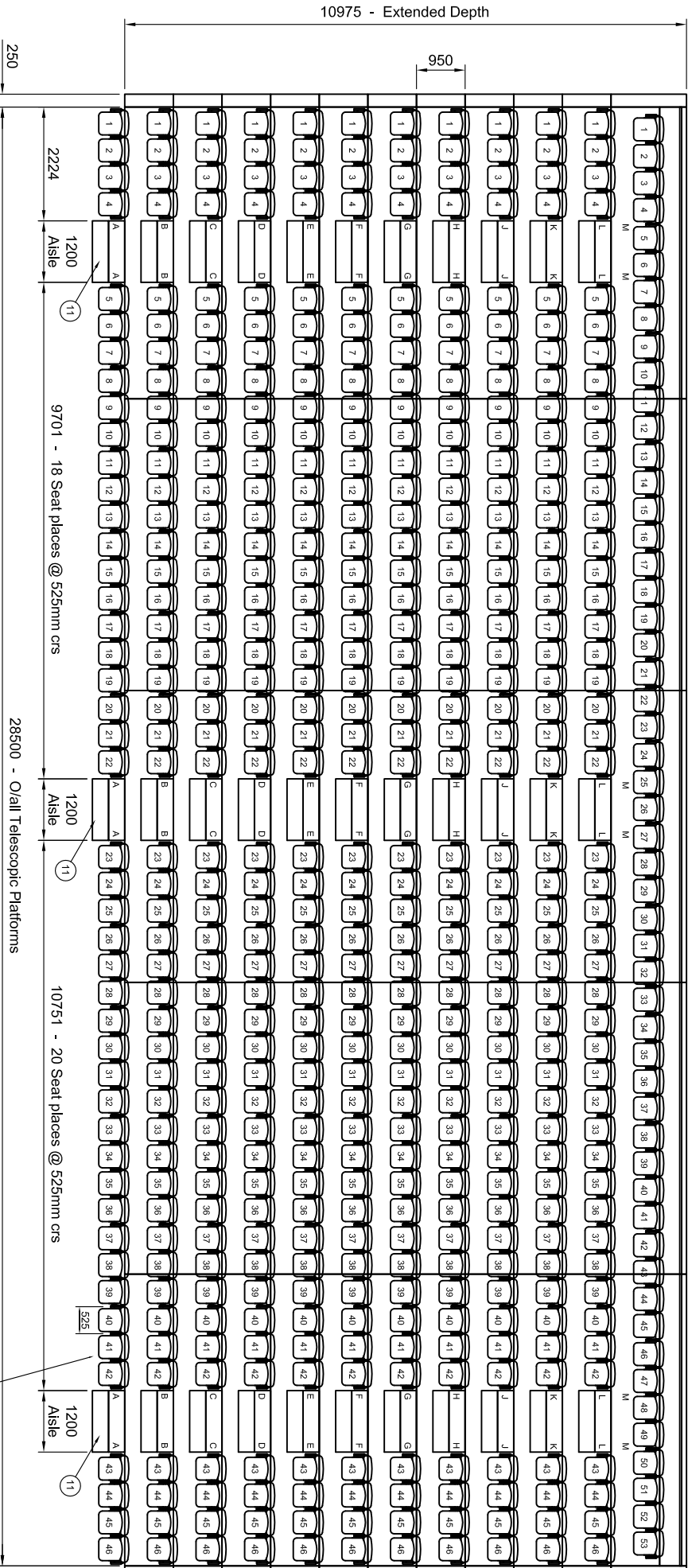




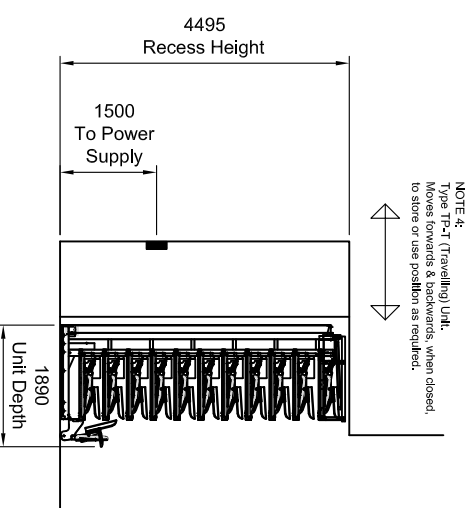
RECESS AREA  
(SEATING STORE POSITION)

11500 - To Power Supply  
(Dimension from Edge of Recess)

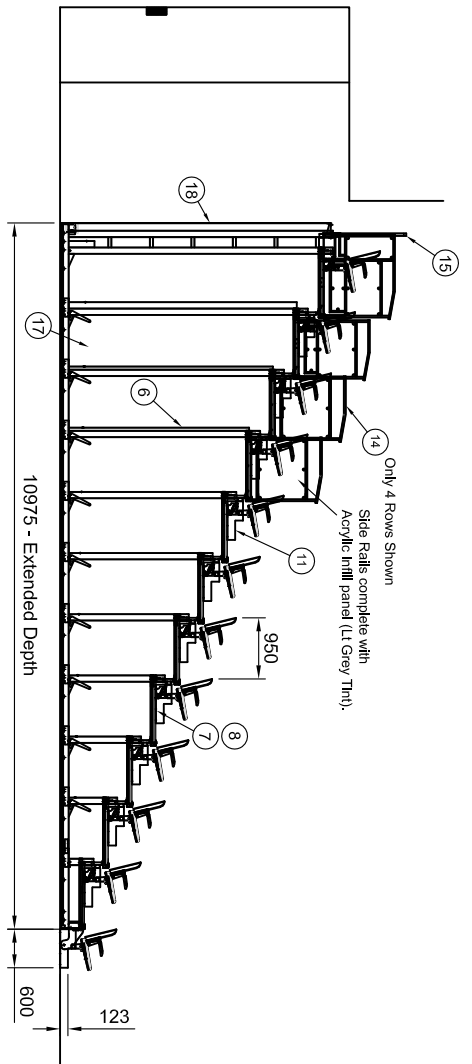


PLAN VIEW - Seating Extended

NOTE 3:  
46 No. Row 0 Chairs. Some removable  
in groups of 3 for wheelchair positions.



SECTION - Seating Closed



SECTION - Seating Extended

Ref/Description	Material
1 PLATFORM IDENTIFICATION	17x1 Travelling-Pol-37-45 - SPACERFRAME
2 ROW RISE	370mm - POWER OPERATED UNITS
3 ROW DEPTH	950mm - (Row 11 = 300mm Rise)
4 NUMBER OF ROWS	12 No. Seat Rows on 11 No. Platforms
5 REAR PLATFORM	STANDARD DECK - Custom Structure
6 PLATFORM STRUCTURE	Colour - Same Black Enc.
7 PLATFORM DECKING	22 mm THICKNESS
8 DECKING FINISH	CARPET - Type to be supplied by WESTLAND
9 PLATFORM DECK SIDE TRIM	INCLUDED
10 PLATFORM DECK INFILLING	NOT REQUIRED
11 INTERMEDIATE STEPS	3 SETS OF 12 No. - 1200mm wide double Escalator panels (Escalator panels with Escalator panels) (Escalator panels)
12 FASCIA PANELS	NOT INCLUDED
13 AISLE FASCIA PANELS	NOT INCLUDED
14 SIDE RAILS	3 SETS OF 2 No. INTEGRAL TYPE Rail fitted with Acrylic panel (Grey tint)
14A SIDE RAILS	2 SETS OF 2 No. FOLDING TYPE Rail fitted with Acrylic panel (Grey tint)
15 REAR RAILS	INCLUDED - Folding Type x 1100mm High Rail fitted with Acrylic panel (Grey tint) NOT REQUIRED
16 FRONT RAILS	NOT REQUIRED
17 PLATFORM SIDE CURTAIN	INCLUDED
18 PLATFORM REAR CURTAIN	INCLUDED
19 PLATFORM SIDE PANELS	NOT REQUIRED
20 PLATFORM REAR PANELS	NOT REQUIRED
21 CUSTOM REAR WALKWAY	NOT REQUIRED
22 TRANSPORTATION TRUCKS	N/A
23 CHAIR IDENTIFICATION	351 SIDE GALLERY EMBL PC 24/Armsrest
24 CHAIR TYPE	MANUAL FOLD DOWN (Row 1 and Row 0 chairs)
25 SEAT CENTRES	525mm nominal
26 SEAT FABRIC	BROOKLYN - FLAME-RETARDANT - BLACK (114)
27 SEAT FRAME	525mm nominal
28 ARMREST TYPE	INCLUDED - Black ABS
29 SEAT NUMBERS	INCLUDED - Fixed to seat pan.
30 AISLE LETTERS	INCLUDED - Fixed to step or deck adjacent to row end.
TOTAL SEAT QUANTITY	513 No. - Telescopic Chairs 46 No. Row 0 Chairs TOTAL: 559 No.

NOTE 1:  
Top 2 rows only, side rails  
are Folding. (Det 14A.)

NOTE 2:  
Lower 9 rows, side rails  
are integral (fixed). Det 14.

All information is subject to confirmation by site survey.

CUSTOMER APPROVAL

(Only for completion when an order is placed with Hussey Seaway Ltd)  
Once you, the customer, are content that the information contained within this drawing satisfactorily meets your requirements, then complete and sign the approval stamp. Note: commencement of this project cannot be undertaken without your approval.  
Print Name: \_\_\_\_\_  
Signature: \_\_\_\_\_

Company Name: \_\_\_\_\_  
Date: \_\_\_\_\_  
Please return to Hussey Seaway Ltd when completed.

POWER SUPPLY DETAILS  
CLIENT TO MOUNT THE FOLLOWING SOCKET AT A HEIGHT OF 1500mm IN THE POSITION SHOWN ON THE PLAN VIEW.  
SOCKET DETAILS:  
BS4343 INDUSTRIAL ANGLED SURFACE SOCKET, WITH BOTTOM ENTRY AND SWITCHED INTERLOCK, BLUE 63A 2P+E.  
ELECTRICITY SUPPLY:  
230 VOLTS, 40 AMPS, SINGLE PHASE.

Rev/No	Revision note	Date	Signature	Checked
C	Updated to Show Seat Number Layout & Power Supply Requirements	23/07/10	ICE	
B	Acrylic panel added to side rails. 10975mm (Det 14A) 22mm	04/11/09	SVB	
A	Initial design			

GENERAL TOLERANCE: ±1.0 mm

**Hussey Seaway**  
PUBLIC SEATING SYSTEMS

THIS DRAWING IS THE PROPERTY AND COPYRIGHT OF HUSSEY SEAWAY LTD. COPYING OR REPRODUCTION WITHOUT WRITTEN PERMISSION IS PROHIBITED. © 2003

Tel: +44 (0)1985 847200  
Fax: +44 (0)1985 847300  
Email: info@husseyseaway.com

Item/Ref	Quantity	Title/Name, designation, material, dimension etc	Article No./Reference
<b>SALES APPLICATION DRAWING</b>			
Kortrijk Xpo Seating Proposal			
Date	Drawn by	Checked by	A1 Scale
23/09/09	SMB	XXX	1:1
Date	Drawn by	Checked by	A1 Scale
009 - A617 - 1	SMB	XXX	1:1